

SECTION 28, T.6N., R.2W., S.L.B. & M.

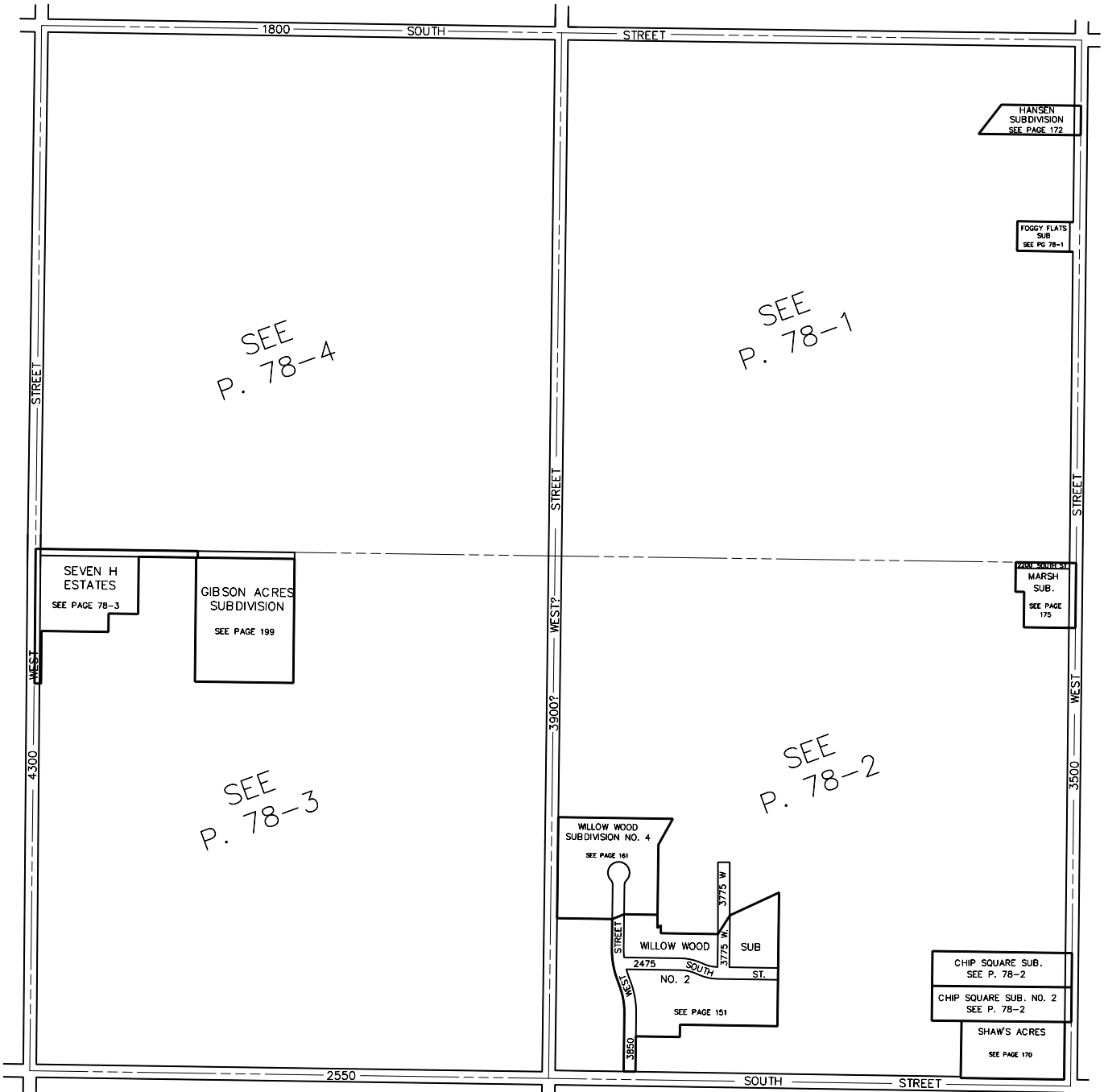
IN WEBER COUNTY

SCALE 1" = 400'

SEE PAGE 57

SEE PAGE 79

SEE PAGE 76



SEE P. 78-4

SEE P. 78-1

SEE P. 78-3

SEE P. 78-2

SEE PAGE 81